

LOUGHS AGENCY OF THE FOYLE CARLINGFORD AND IRISH LIGHTS COMMISSION



# Carlingford Area and Tributaries Catchment Status Report 2014

Conservation and assessment of fish  
populations and aquatic habitats

Art Niven, Mark McCauley & Rachel Scott, Loughs Agency of the Foyle Carlingford and Irish  
Lights Commission

July 2015



Conservation actions and assessments on fish populations and aquatic habitats are presented for 2014. The status reports have been designed to facilitate quick reference to contemporary information. Additional information can be found in associated publications and in previous status reports available on the Loughs Agency website [www.loughs-agency.org](http://www.loughs-agency.org)

Headquarters  
22, Victoria Road  
Londonderry  
BT47 2AB  
Northern Ireland

Tel: +44(0)28 71 342100

Fax: +44(0)28 71 342720

[general@loughs-agency.org](mailto:general@loughs-agency.org)

[www.loughs-agency.org](http://www.loughs-agency.org)

Regional Office  
Dundalk Street  
Carlingford  
Co Louth  
Republic of Ireland

Tel+353(0)42 938 3888

Fax+353(0)42 938 3888

[carlingford@loughs-agency.org](mailto:carlingford@loughs-agency.org)

[www.loughs-agency.org](http://www.loughs-agency.org)



**Report Reference LA/CSR/C/15**

**Written and Prepared by Art Niven, Mark McCauley & Rachel Scott.**

**For further information contact [art.niven@loughs-agency.org](mailto:art.niven@loughs-agency.org)**

**DOCUMENT CONTROL**

<b>Name of Document</b>	Carlingford Area and Tributaries Catchment Status Report 2014				
<b>Author (s):</b>	Art Niven, Mark McCauley & Rachel Scott				
<b>Authorised Officer:</b>	John McCartney				
<b>Description of Content:</b>	Conservation and assessment of fish populations				
<b>Approved by:</b>	John Pollock & Patrick Boylan				
<b>Date of Approval:</b>	31/07/15				
<b>Assigned review period:</b>	12 months				
<b>Date of next review:</b>	31/07/16				
<b>Document Code</b>	LA/CSR/C/15				
<b>This documents comprises</b>	<b>TOC</b>	<b>Text</b>	<b>List of tables</b>	<b>Table of Figures</b>	<b>No. Appendices</b>
		X	X	X	

**Version Control Table**

<b>Version No.</b>	<b>Status</b>	<b>Author (s)</b>	<b>Reviewed by</b>	<b>Approved by</b>	<b>Data of issue</b>
<b>Version 1</b>	Draft	Art Niven	John McCartney	John Pollock	31/07/15
<b>Revision 2</b>					
<b>Revision 3</b>					

## TABLE OF CONTENTS

TABLE OF CONTENTS .....	4
1.0 INTRODUCTION .....	7
2.0 ATLANTIC SALMON STOCKS SUMMARY .....	8
2.1 NET FISHERIES.....	9
Fig.1 Total commercial catch 1952-2014 and 5 year average total commercial catch. ....	9
2.2 ROD CATCH.....	10
Fig.3 Reported rod catch for salmon/grilse in the Loughs Agency area and 5 year average. ....	11
Fig.4 Newry/Clanrye River reported rod catch 2001-2014. ....	12
Fig.5 Whitewater River reported rod catch 2001-2014. ....	12
2.3 FISH COUNTERS .....	13
Fig.6 Newry River electronic fish counter figures 2007 to 2014 *Note partial count only recorded for 2007 from September to end of year. Counter was not operational during 2011. ....	14
Fig.7 Newry River fish counter figures 2009-2014. *Counter was not operational in 2011.....	14
2.4 JUVENILE ABUNDANCE/ELECTROFISHING SURVEYS.....	15
Fig.8 Newry River/Clanrye salmon fry electrofishing index. Based on a fluctuating number of sites .....	15
Fig.9 Whitewater River salmon fry electrofishing index. Based on a fluctuating number of sites. ....	15
Fig.10 Carlingford salmon fry electrofishing classification 2014. ....	16
2.5 MARINE SURVIVAL.....	17
2.6 DISCUSSION .....	17
3.0 TROUT STOCKS SUMMARY .....	18
3.1 ROD CATCH.....	19

Fig.11 Loughs Agency reported and corrected rod catch (Sea trout) with % returns made. ....	20
Fig.12 Reported rod catch for Sea trout in the Loughs Agency area and 5 year average. ....	21
Fig.13 Newry/Clanrye catchment reported Sea trout rod catch. ....	21
Fig.14 Whitewater catchment reported Sea trout rod catch. ....	22
3.2 JUVENILE ABUNDANCE/ELECTROFISHING SURVEYS.....	22
Fig.15 Newry/Clanrye trout fry index 2001-2014. Based on a fluctuating number of sites. ....	23
Fig.16 Whitewater trout fry index 2001-2014. Based on a fluctuating number of sites ....	23
Fig.17 Carlingford area trout fry electrofishing classifications 2014. ....	24
3.3 DISCUSSION .....	25
Fig.18 Sea trout captured on the Altnaghree Burn, 2014. ....	25
4.0 SUMMARY OF OTHER SURVEYS AND FISH STOCK ASSESSMENTS .....	26
4.1 WATER FRAMEWORK DIRECTIVE FISH MONITORING .....	27
Fig.19 Water Framework Directive fish monitoring on the River Derg, 2014.	
Fig.20 Brown trout captured in a fyke net on the Owenkillew River, 2014.	
Fig.21 Water Framework Directive fish surveillance monitoring stations within the Carlingford area. ....	29
Fig.22 Indicative classifications based on Loughs Agency 5 min semi quantitative electrofishing data 2014. ....	30
4.2 INVASIVE SPECIES AND BARRIERS TO MIGRATION.....	31
Fig.23 Mapping invasive species on a handheld GIS.....	31
5.0 CARLINGFORD AREA INSPECTORS UPDATE 2014 .....	32
5.1 ENVIRONMENTAL MONITORING .....	32
Fig.24 Fishery officers carry out follow-up electrofishing survey of enhancement works on Newry/Clanrye River. ....	32
5.2 PROTECTION.....	32

Fig.25 Agency staff deploy aerator system in attempt to mitigate impact of agricultural waste discharge on the Bessbrook River, July 2014.....	33
5.3 ANGLING DEVELOPMENT .....	33
Fig.26 View of Carlingford Lough from Slieve Foy. ....	34
6.0 STILLWATER FISH SURVEYS.....	34
Fig.27 Still water fish survey, Lough Nambraddan 2014. ....	35
7.0 FISHERIES HABITAT IMPROVEMENT .....	35
Fig.28 Volunteers during Wild Trout Trust practical habitat improvement workshop .....	35
Fig.29 Practical habitat improvement workshop on the Murlough Burn. .	36
Fig.30 Bank protection underway using soft methods. ....	36
Fig.31 Glenshane native riparian tree planting scheme 2014. ....	37
Fig.32 Trees were individually staked and guarded.....	37
8.0 CATCHMENT INITIATIVES.....	38
9.0 GENERAL ACTIONS FOR 2014/2015 .....	39



@ArtNiven



Loughs Agency TV

**This document and its contents are copyright of the Loughs Agency ©2015**

## **1.0 INTRODUCTION**

The Loughs Agency continued to fulfil and develop its broad conservation and protection remit in 2014. The catchment status reports have been designed to provide a mechanism for interested stakeholders to access important facts and figures for quick reference. The key long term data sets collected as part of the “audit point management system” for Atlantic salmon are presented here and include rod catch, returning adult salmon fish counts derived from electronic fish counters, electrofishing surveys on juvenile Atlantic salmon and spawning counts.

Over recent years the monitoring role in support of the conservation and protection functions of the Loughs Agency and other national and international obligations has been developed. The Loughs Agency freshwater fisheries monitoring programme incorporates a variety of important long term monitoring projects. These include ongoing habitat impacts, barriers to fish migration and invasive species surveys, Water Framework Directive fish monitoring, rare fish monitoring, stillwater fish surveys, adult Sea trout monitoring, multi species index tributary monitoring and pre spawning trout monitoring. All of the long term monitoring projects provide evidence for inclusion into dynamic management strategies.

From 2014 information on monitoring projects has been communicated to stakeholders in an increasing number of accessible forms including through social media. Twitter has been used extensively to convey real time survey information from the full spectrum of monitoring projects. You tube has also been utilised to further promote the monitoring projects and to provide a narrative of and context to these. The Loughs Agency appreciates that an important aspect of conservation and protection of our aquatic resources is to promote awareness of these. By using a variety of media ranging from print, video, audio and social media the broadest possible audience can be reached providing stakeholders with important, timely and relevant information. This information can then be utilised in many ways both internally by Loughs Agency staff and externally by stakeholders to deliver sustainable social, economic and environmental development to the local communities of the Foyle and Carlingford areas. For more information contact [art.niven@loughs-agency.org](mailto:art.niven@loughs-agency.org)

## 2.0 ATLANTIC SALMON STOCKS SUMMARY

- There are no net fisheries for salmon in the Carlingford area in addition there were no net fisheries pursued for Atlantic salmon in the Foyle area in 2014. This is due to the continued failure of the River Finn to meet its conservation limits as outlined under the Foyle Area (Control of Fishing) Regulations 2010. Angling is permitted in the River Finn and River Foyle on a catch and release basis only.
- Total declared Atlantic salmon rod catch for the Foyle and Carlingford area was 1600. Total declared rod catch for the Carlingford catchments was 4. Voluntary catch and release for the Foyle and Carlingford areas was 48% and 75% for the Whitewater River in Carlingford.
- Fish counts derived from an electronic fish counter on the Newry River was 392 fish in 2014.
- Juvenile electrofishing surveys within the Carlingford catchments at 78 sites recorded an average of 1 salmon fry (Young of Year). Within the Whitewater catchment at 16 sites there was an average of 4 salmon fry.

### Loughs Agency Management Strategy for Atlantic salmon

The Loughs Agency uses an audit point management system for monitoring the populations of Atlantic salmon within the Foyle and Carlingford areas. Population estimates and indices are derived for various life history stages including adult counts from electronic fish counters situated at key locations, spawning redd counts, juvenile electrofishing indices, rod catch and commercial net catches.

Numbers of Atlantic salmon stocks particularly grilse (1SW fish) from southern populations of north east Atlantic stocks are currently at a low point. International research has highlighted climate change and marine ecosystem change as potential causes for this observed decline. The Loughs Agency is working with colleagues at regional, national and international levels to understand this decline and to implement best practice conservation actions.



## 2.1 NET FISHERIES

There are no salmon net fisheries within the Carlingford area. Net fisheries have not been operated in the Foyle area since 2009 (Figure 1). The Foyle Area (Control of Fishing) Regulations 2010 provides various mechanisms for regulating both commercial and rod fisheries for salmon including under Section 3. (1) The Commission shall make a declaration.....if it is satisfied that..... (d) the number of salmon which have migrated upstream of the River Finn fish counter during each of any two of the previous five calendar years has not exceeded 5,410. A declaration under this shall..... (d) in the case of sub-paragraph (d), suspend netting in the River Foyle, Lough Foyle and seaward of Lough Foyle and restrict angling in the River Finn to angling on a catch and release basis only from the date and time specified in the declaration....The Commission can make the relevant declaration ending the suspension of netting and restriction on angling if it is satisfied that the number of salmon migrating upstream of the relevant counter during each of any four of the previous five calendar years has exceeded the number of salmon for that river.

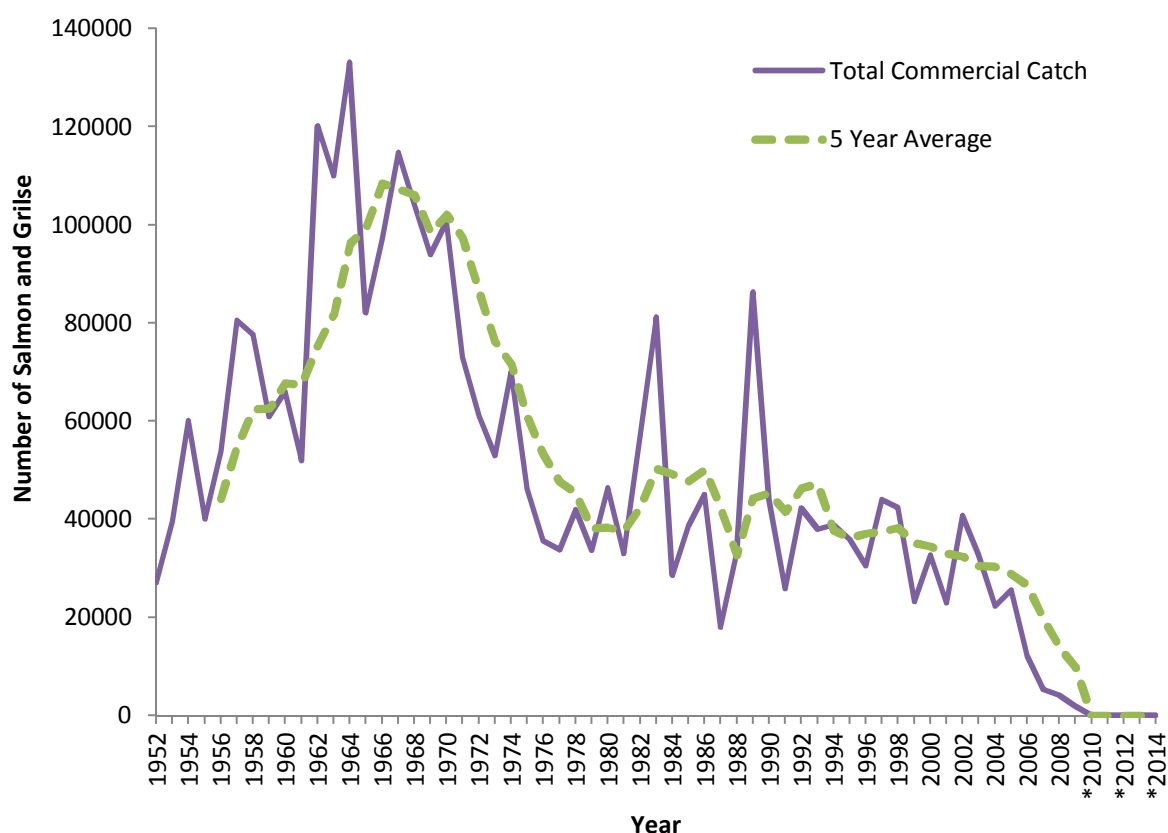


Fig.1 Total commercial catch 1952-2014 and 5 year average total commercial catch.

## 2.2 ROD CATCH

Total rod catch returns were 14% in 2014 (Figure 2). A total of 1600 salmon/grilse were caught in the Foyle and Carlingford areas in 2014 (Figure 2 & 3). 4 salmon and grilse were reported caught in the Carlingford catchments (Figure 4). Salmon/Grilse voluntarily caught and released were 48% in the Foyle and Carlingford area and 75% in the Carlingford area.

### **It is your legal obligation to make an accurate and timely rod catch return.**

There are a number of important reasons for making rod catch returns.

- How many fish were caught in YOUR RIVER OR LAKE?
- What % of fish were caught and released in YOUR RIVER OR LAKE?
- Is catch and release increasing?
- What species were caught?
- Essential for developing sustainable fishery management policy
- Screening of future developments (roads, hydro etc.) against fishery interests.
- An important tool for assessing strength of runs
- Aids with developing access and infrastructure (stiles etc)
- It is required by law that all rod licence holders make an accurate catch return
- Facilitates long term trend monitoring
- Participate in the management of your river (doing your bit)
- At a time of reduced marine survival for Atlantic salmon accurate information is essential for sustainable management
- Aids in ensuring good decision making so that future generations can enjoy the sport of fishing
- Ensuring that all species caught are sustainably managed now and in the future

**An unreported fish is a wasted opportunity, for economic development, for conservation, for protection of our fishery resources, for education and for future generations.**

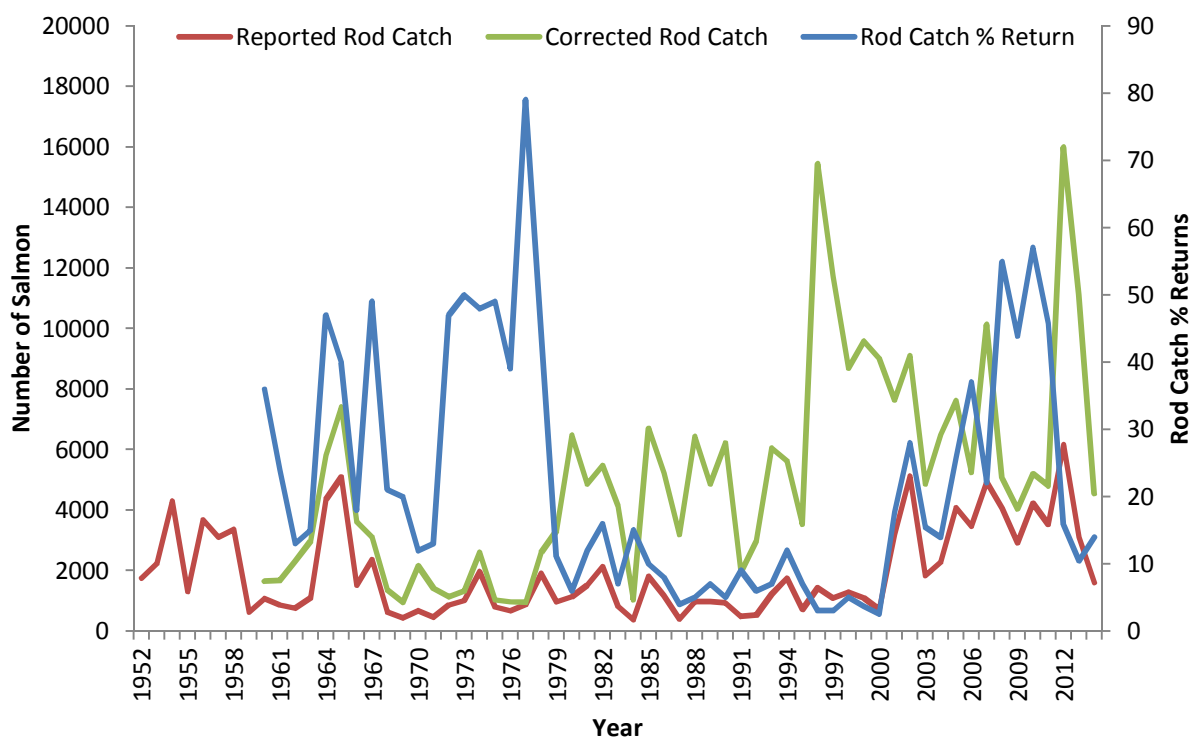


Fig.2 Loughs Agency reported and corrected rod catch with % returns made.

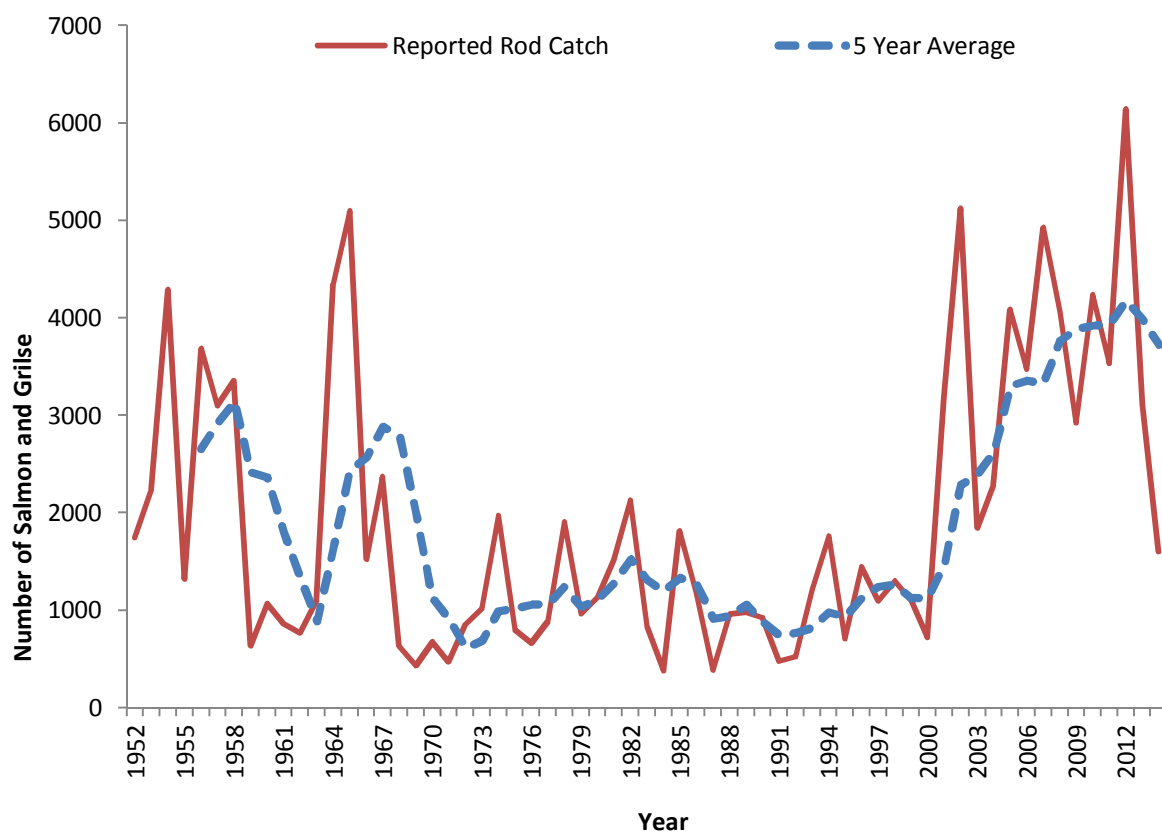


Fig.3 Reported rod catch for salmon/grilse in the Loughs Agency area and 5 year average.

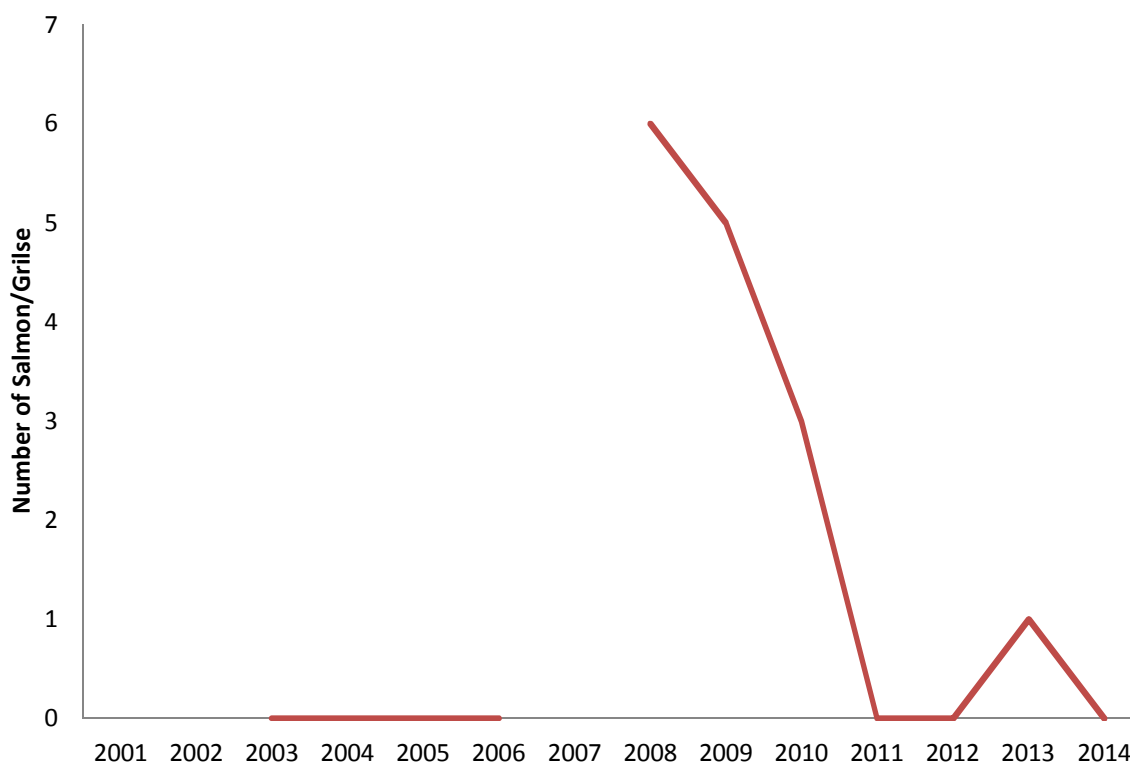


Fig.4 Newry/Clanrye River reported rod catch 2001-2014.

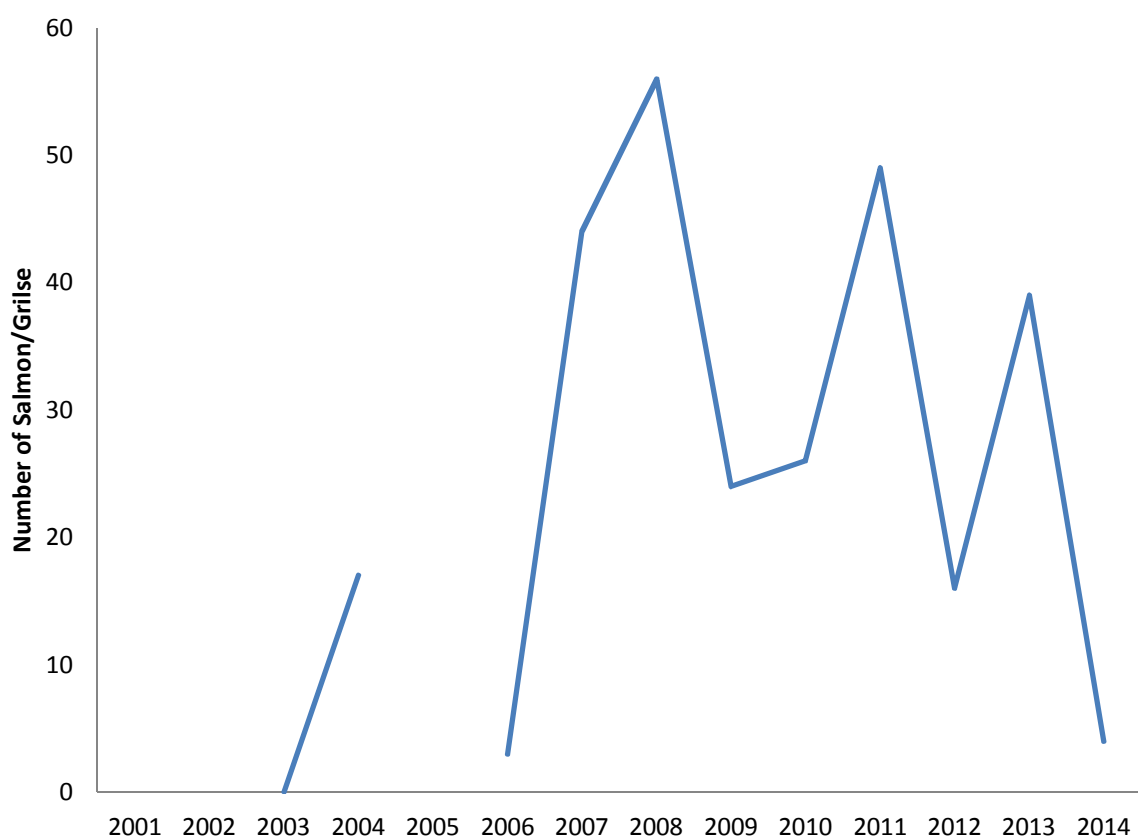


Fig.5 Whitewater River reported rod catch 2001-2014.

### 2.3 FISH COUNTERS

The Loughs Agency operates a network of electronic fish counters throughout the Foyle and Carlingford areas to monitor the migration of Atlantic salmon into freshwaters. The counters are used to assess the attainment of conservation limits and management targets for key catchments.

In 2014 the Newry fish count as recorded by the electronic fish counter was 392.



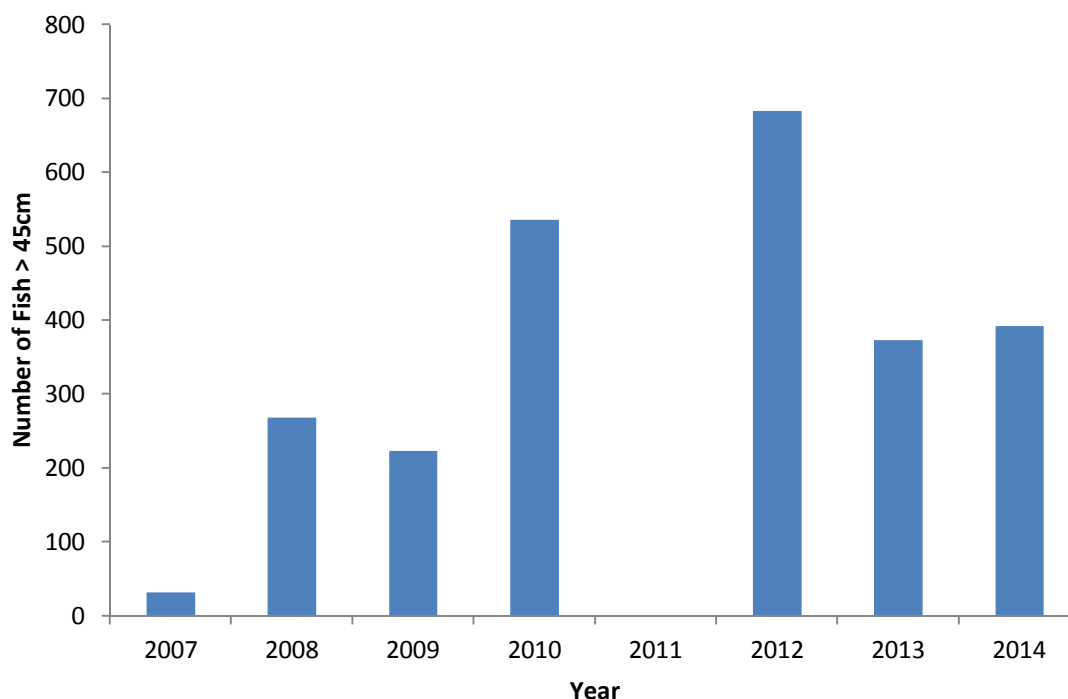


Fig.6 Newry River electronic fish counter figures 2007 to 2014 \*Note partial count only recorded for 2007 from September to end of year. Counter was not operational during 2011.

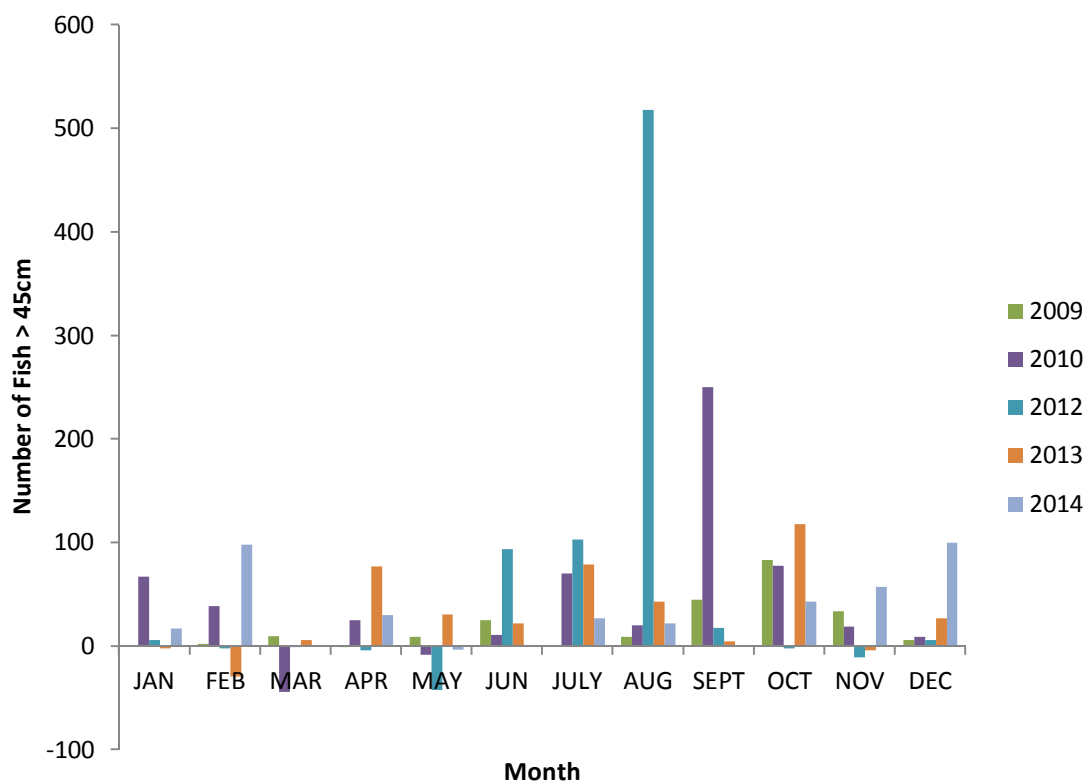


Fig.7 Newry River fish counter figures 2009-2014. \*Counter was not operational in 2011.

## 2.4 JUVENILE ABUNDANCE/ELECTROFISHING SURVEYS

Juvenile Atlantic salmon abundance is measured on an annual basis by following a standardised procedure (Crozier and Kennedy, 1996). A number of sampling stations are monitored using this semi-quantitative (5 minute timed) electrofishing methodology. Over many years an index has been developed to show trends for individual catchments (Figures 8 & 9). In 2014 the mean number of salmon fry (young of year) recorded at 78 monitoring stations within the Newry/Clanrye catchment was 1. The mean number of salmon fry recorded at 16 monitoring stations on the Whitewater River was 4.

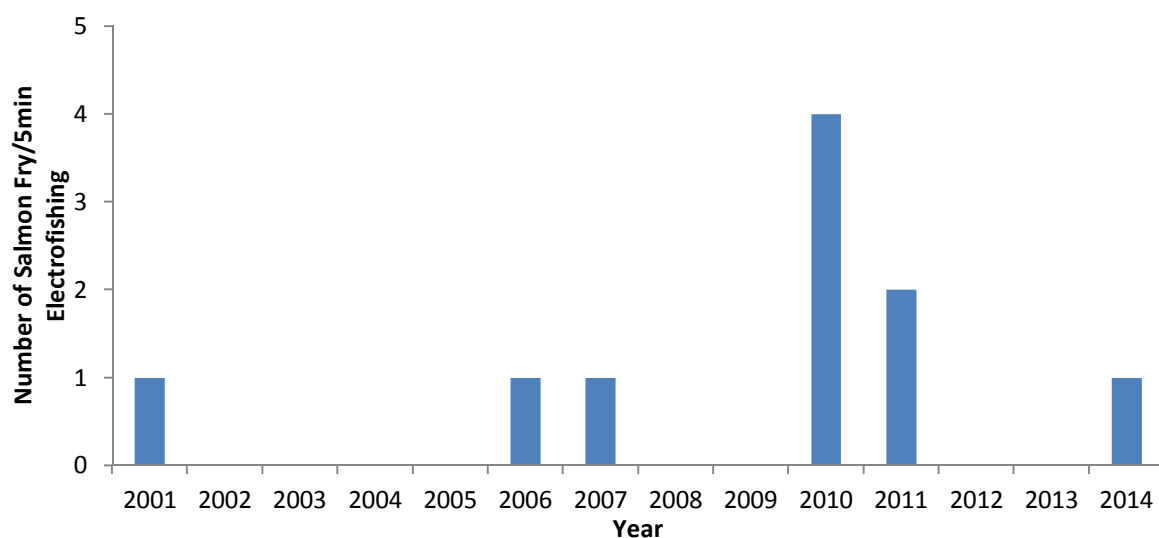


Fig.8 Newry River/Clanrye salmon fry electrofishing index. Based on a fluctuating number of sites

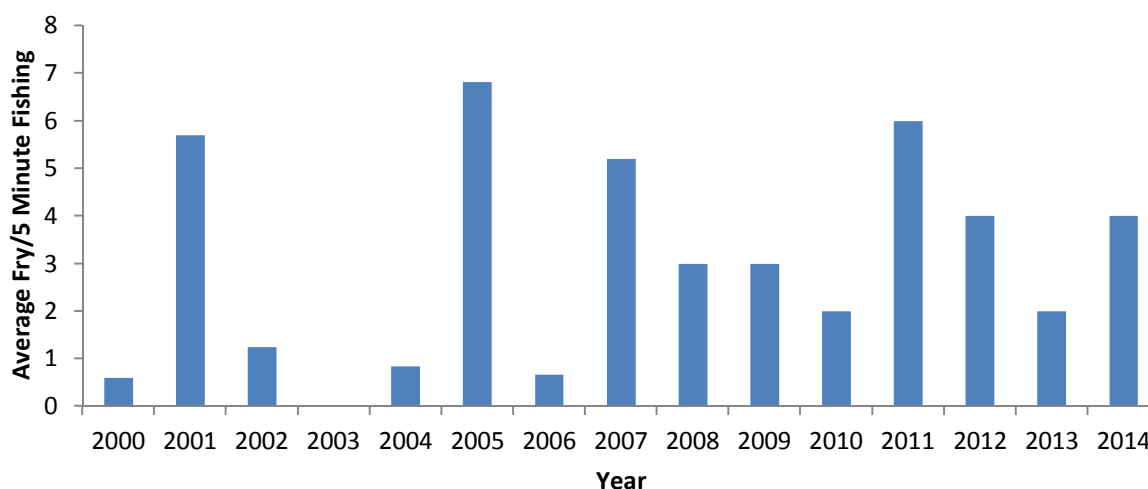


Fig.9 Whitewater River salmon fry electrofishing index. Based on a fluctuating number of sites.



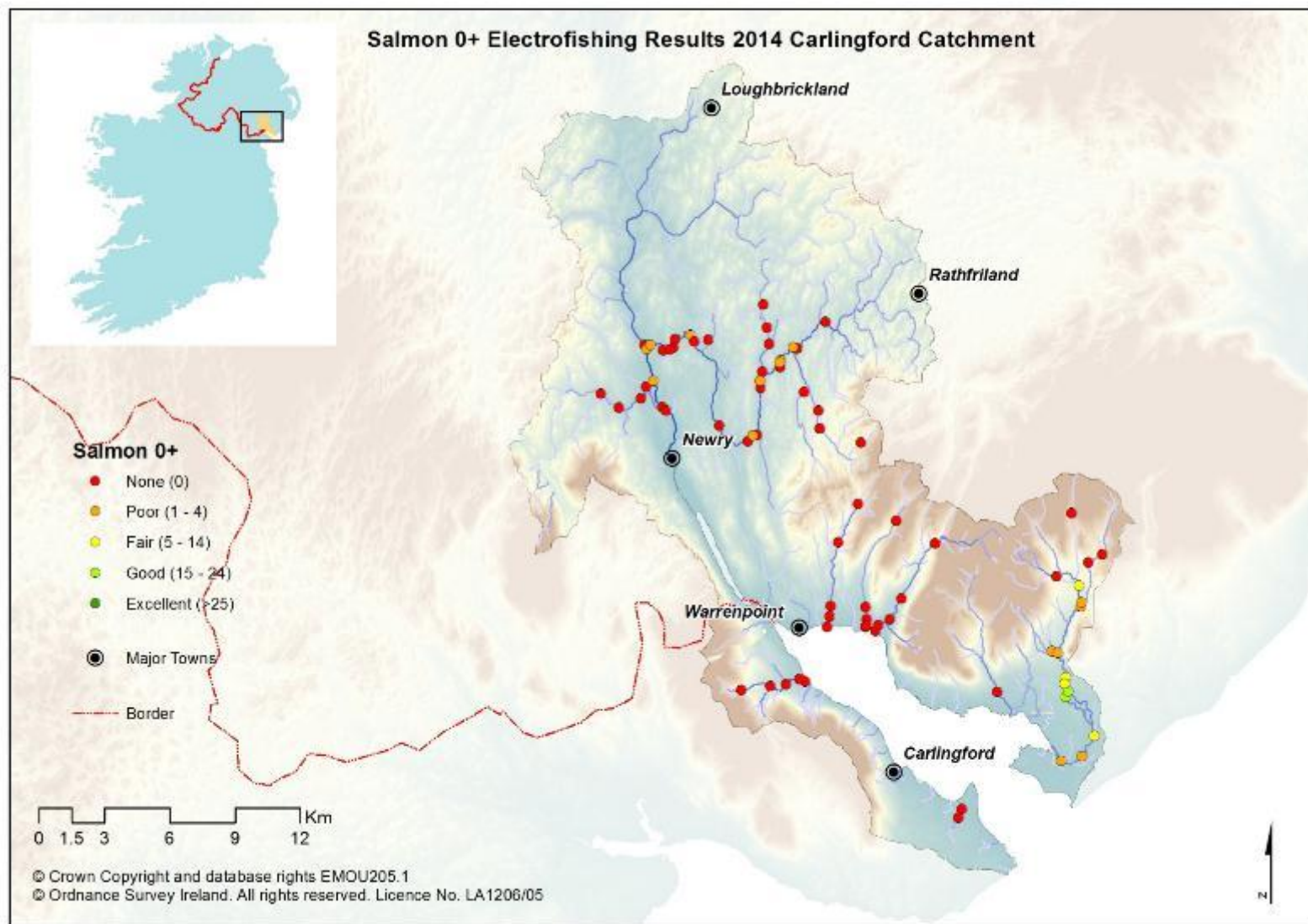


Fig.10 Carlingford salmon fry electrofishing classification 2014.



## **2.5 MARINE SURVIVAL**

Marine survival continues to be of significant concern throughout the southern range of Atlantic salmon in the North East Atlantic. The nearest monitoring station to the Foyle area which provides robust survival data to the International Council for the Exploration of the Seas Working Group on North Atlantic Salmon is the River Bush in Co Antrim. Marine survival rates for One Sea Winter (1SW) grilse pre the mid 1990's was around 30%, in recent years this has fallen to extremely low levels with a marine survival rate of 4.6% for the 2013 cohort returning to the river in 2014. This is a decrease from the 11.7% marine survival rate recorded for the 2012 cohort, and still well below historic highs. Multi Sea Winter (MSW) Atlantic salmon appear to be doing slightly better.

The international SALSEA Merge project investigating the marine portion of the Atlantic salmon's life cycle reported in 2011. Further information can be found at [http://www.nasco.int/sas/salseamerge\\_documents.htm](http://www.nasco.int/sas/salseamerge_documents.htm) this will provide a firm platform on which to develop future salmon management strategy at an international level that takes into consideration the complex lifecycle of Atlantic salmon and its place within both freshwater and marine ecosystems.

## **2.6 DISCUSSION**

As outlined above Atlantic salmon have a complex lifecycle which can be impacted upon by many factors. The impacts cannot always be quantified making it difficult to accurately estimate the number of returning adult salmon/grilse to our rivers each year. An analysis of cohort/age class strength throughout its lifecycle from egg to spawning adult is complicated by numerous factors. These include varying egg survival rates, differing age at smolting, marine survival rates, time spent at sea/age at spawning and number of spawning migrations made.

It is extremely difficult to infer from one life history stage or stages what the strength of any returning cohort will be. This is currently exacerbated by extremely low marine survival rates possibly as a result of altered marine food webs and oceanic prey distribution all in the context of climate change.

### 3.0 TROUT STOCKS SUMMARY

- In 2014 total declared Sea trout rod catch for the Foyle and Carlingford areas was 287. Total declared rod catch for the Carlingford catchments was 83. There were 3 Brown trout declared caught in 2014.
- In 2014 juvenile electrofishing surveys within the Clanrye/Newry catchment at 35 sites recorded an average of 2 trout fry. Within the Whitewater catchment at 16 sites, an average of 9 trout were recorded.
- Declines in sea trout stocks have been observed in parts of Ireland and the west coast of Scotland. Diverse reasons for population declines have been proposed and are currently being investigated.
- The Loughs Agency will continue to conduct monitoring as part of various trout research projects in 2014 which will monitor local sea trout.
- Ongoing brown trout monitoring projects will continue in 2014 including a brown trout radio tracking study of the Lough Derg wild brown trout population.

#### Development of a Loughs Agency Trout Management Strategy

In 2013 the Loughs Agency published its trout strategy. The strategy contains 19 policies which relate to six main areas:

- **Habitat improvement**
- **Exploitation**
- **Stock management**
- **Barriers to migration**
- **Culverting**

Water abstraction and impoundment

At present Loughs Agency monitor stocks of trout in a number of ways including analysis of rod catch data, and juvenile electrofishing surveys. During 2014 a sea trout monitoring programme continued on a tributary of the Burdennet and the Lough Derg Wild Trout Conservation Project continued with the Loughs Agency working in partnership with Pettigo and District Angling Association.

### 3.1 ROD CATCH

Sea trout are a prized quarry in both the Foyle and Carlingford areas but display very different life history strategies to both the resident brown trout and Atlantic salmon. Rod catch provides one of the key “audit points” for the management of this species. Declared rod catch has highlighted the significant declines over recent decades. It should be noted that sea trout populations fluctuate greatly and like many wild populations of animals they are prone to boom and bust cycles.

Over the duration of the decline in sea trout populations various reasons for the decline have been suggested including spawning habitat loss, barriers to migration, increased numbers of sea lice due to salmon aquaculture, natural population fluctuations, inshore marine ecosystem change, over fishing, pollution of key spawning streams etc. All of these will have impacted the Sea trout populations to some extent. Within the Foyle area Sea trout average weight tends not to exceed 2-3 lbs with larger specimens being quite rare. In the Carlingford area Sea trout are considerably larger with average weight somewhere between 5-8lbs with larger double figure specimens encountered from time to time. The difference between west and east may be down to the quality and availability of suitable prey species. Irish Sea populations of Sea trout tend to be much larger and may be indicative of less impacted prey species populations. A parallel could be made between documented north coast of Ireland sea bird populations and Irish Sea populations, with Irish Sea populations doing better because of better availability of prey species. North coast of Ireland sea bird populations have been in decline over recent decades, in parallel with the plight of Sea trout.

In the Foyle and Carlingford area the minimum size for retaining a Brown trout or Sea trout is 25.4cm. All Sea trout over 40cm must be tagged and there is a bag limit of 1 Sea trout per day, up to a maximum of 5 during the period from the start of the season to 31<sup>st</sup> May. A bag limit of 2 Sea trout over 40cm per day applies from the 1<sup>st</sup> June to the end of the season up to a maximum of 20. There is also a daily bag limit of 4 Brown trout or Sea trout of 40cm or less in length throughout the season. Stricter club/association rules may apply.

Within the Foyle area there is generally a geographic north south divide with sea trout dominant in the northern catchments and brown trout dominant in the southern catchments. Historically the northern catchments and their associated small streams provided excellent spawning and nursery habitat and when associated with high densities of salmon may have been a major reason for seaward migration of juvenile trout in search of prey and less competition. The southern catchments still hold good populations of resident Brown trout with significant angling development potential. These populations however are more susceptible to pollution events. Figures 11-14 outline Sea trout rod catch for the Foyle and Carlingford areas and for the Clanrye/Newry catchment and Whitewater catchment. This area may be locally significant for Sea trout spawning and as such would merit closer investigation.

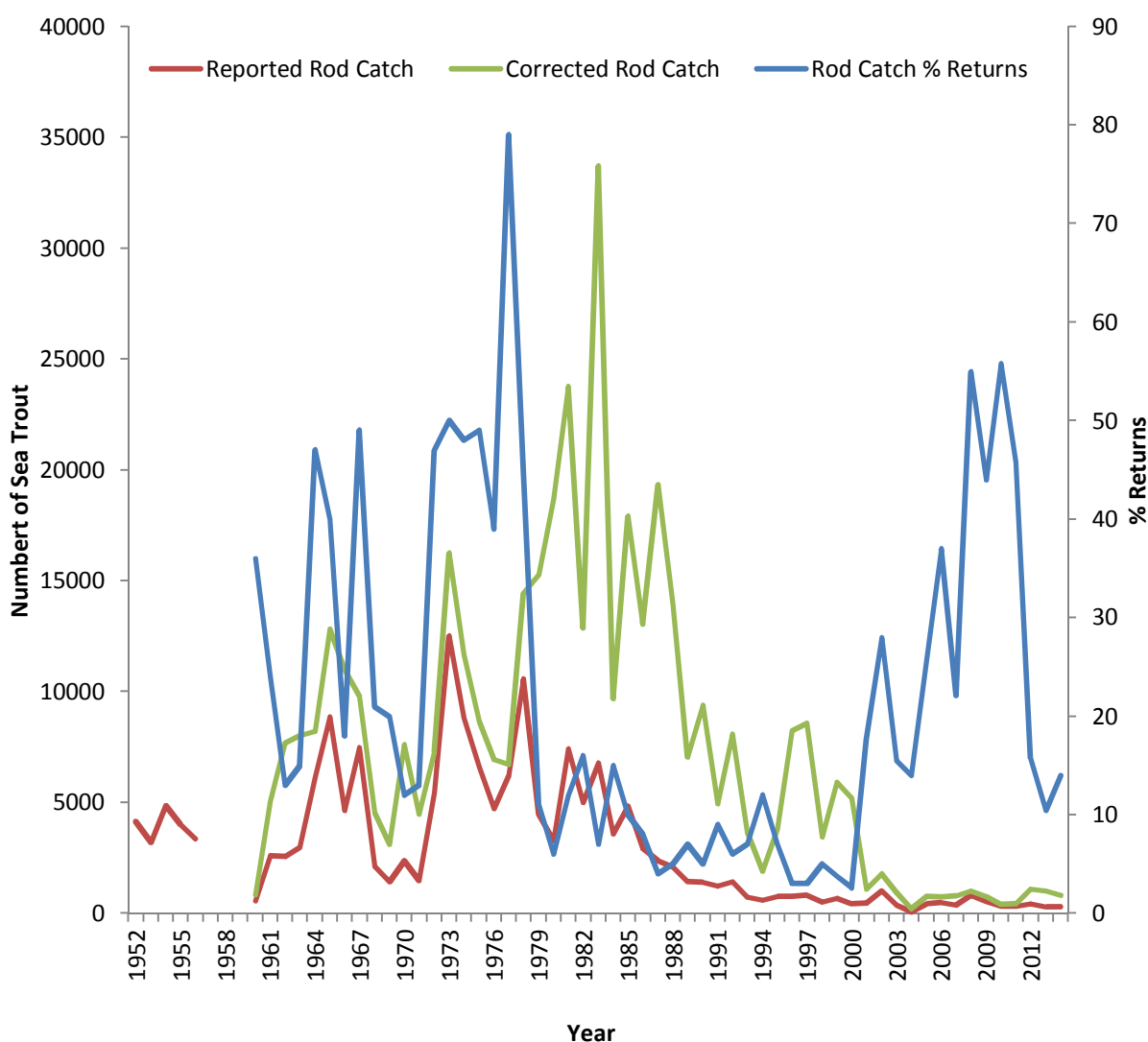


Fig.11 Loughs Agency reported and corrected rod catch (Sea trout) with % returns made.

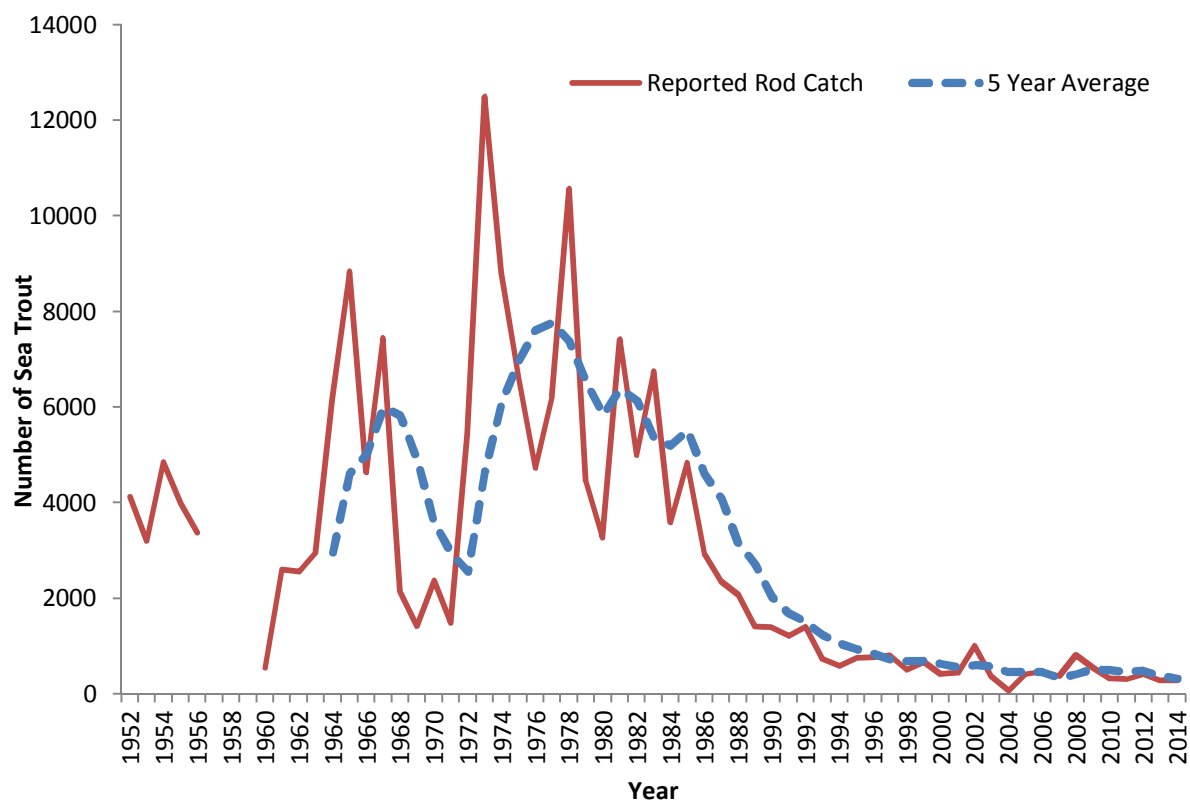


Fig.12 Reported rod catch for Sea trout in the Loughs Agency area and 5 year average.

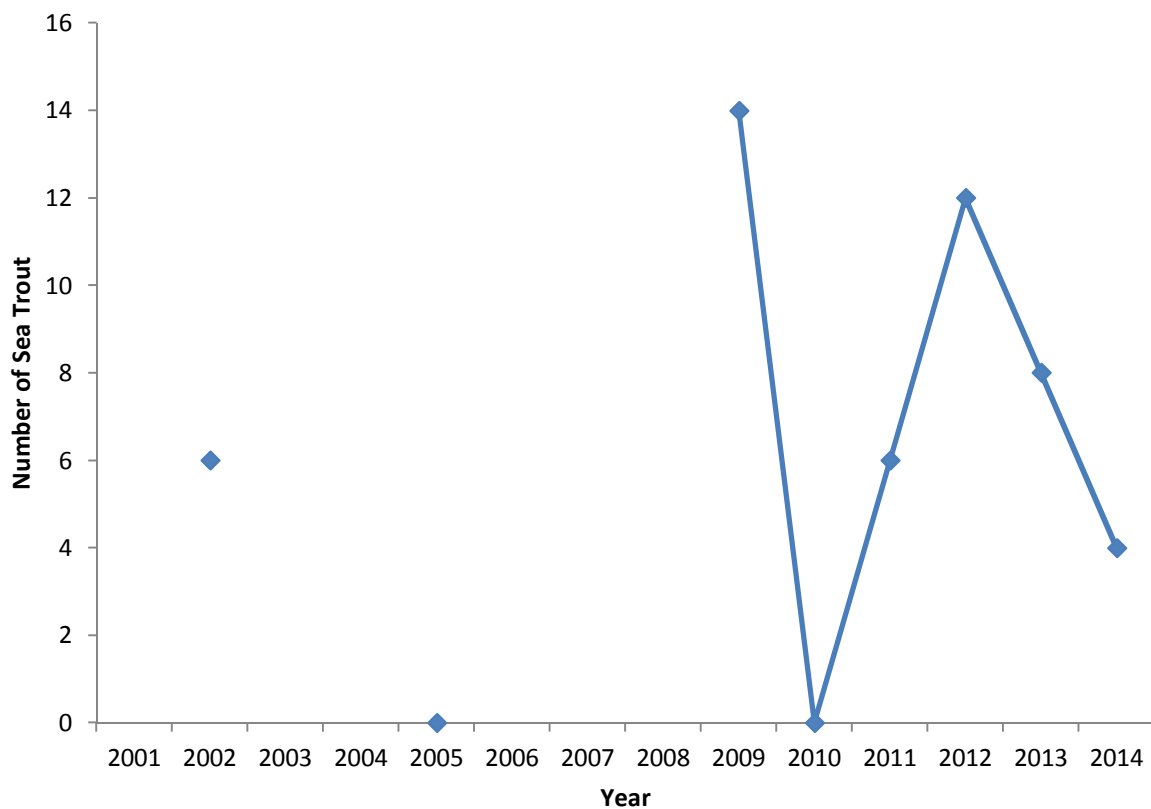


Fig.13 Newry/Clanrye catchment reported Sea trout rod catch.

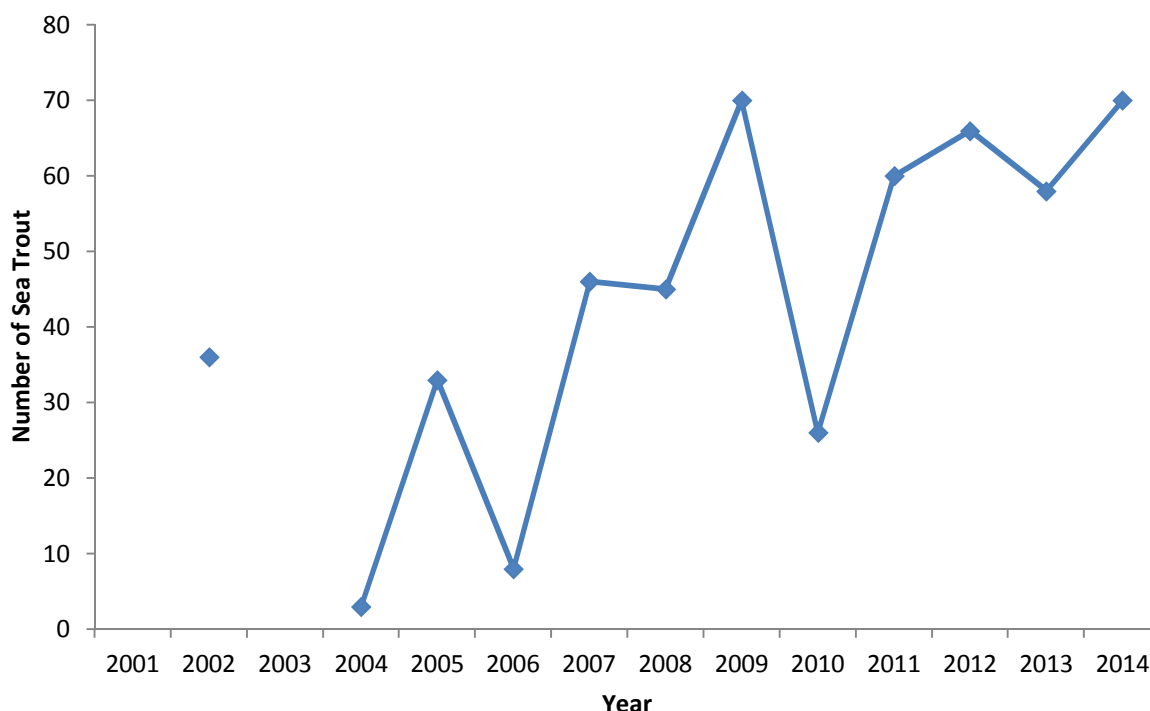


Fig.14 Whitewater catchment reported Sea trout rod catch.

### 3.2 JUVENILE ABUNDANCE/ELECTROFISHING SURVEYS

As for juvenile Atlantic salmon, Trout abundance is also measured on an annual basis by following the same standardised procedure (Crozier and Kennedy, 1996). A number of sampling stations are monitored using this semi-quantitative (5 minute timed) electrofishing methodology. Over many years an index has been developed to show trends for individual catchments (Figure 15). In 2014 the mean number of trout fry (young of year) recorded at 35 monitoring stations within the Newry/Clanrye catchment was 2. The mean number of trout fry recorded at 16 monitoring stations within the Whitewater catchment was 9.



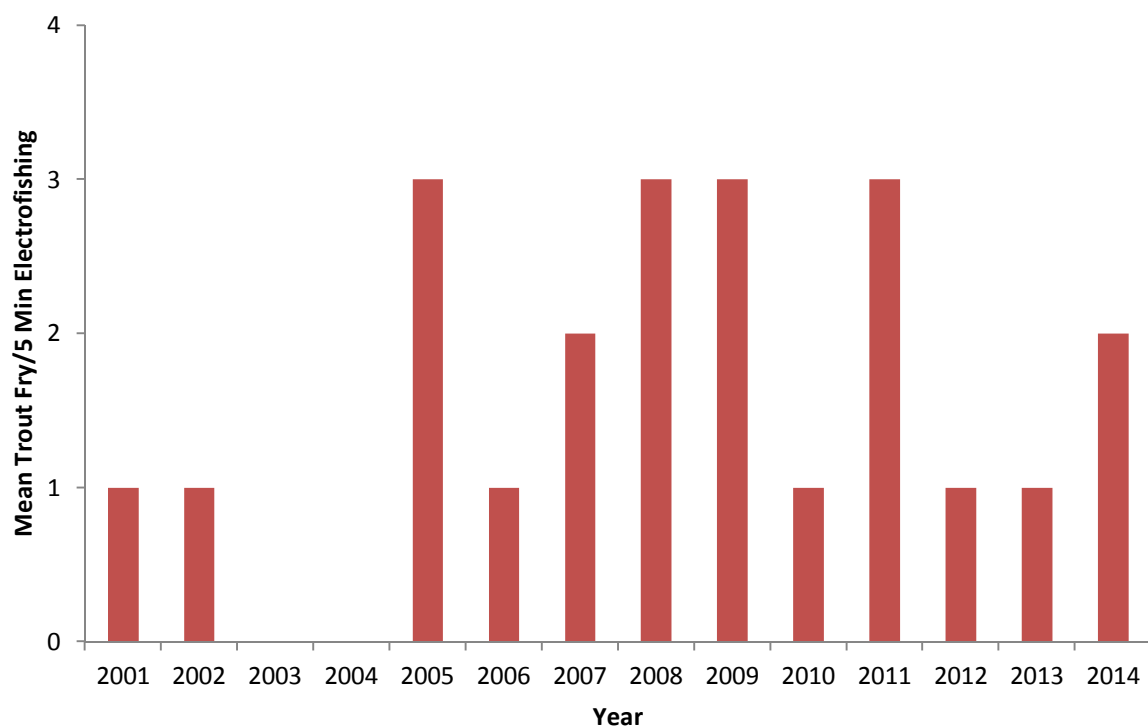


Fig.15 Newry/Clanrye trout fry index 2001-2014. Based on a fluctuating number of sites.

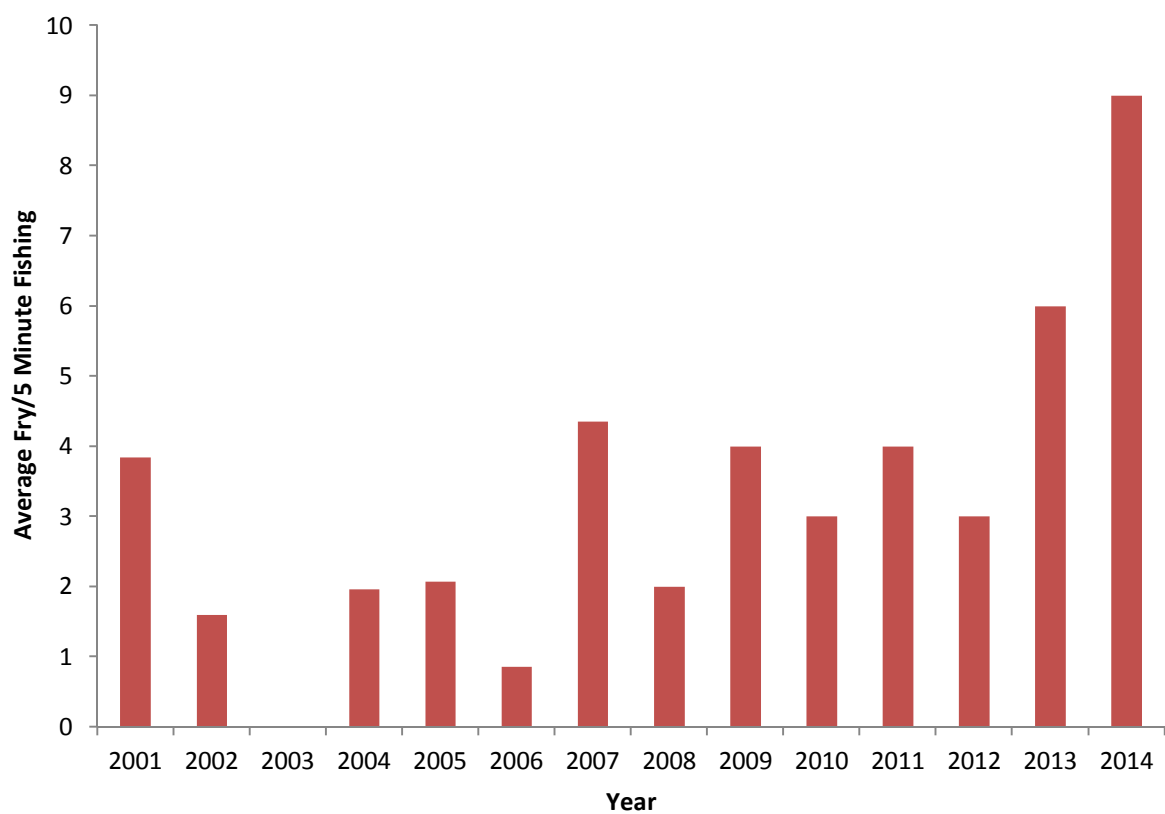


Fig.16 Whitewater trout fry index 2001-2014. Based on a fluctuating number of sites

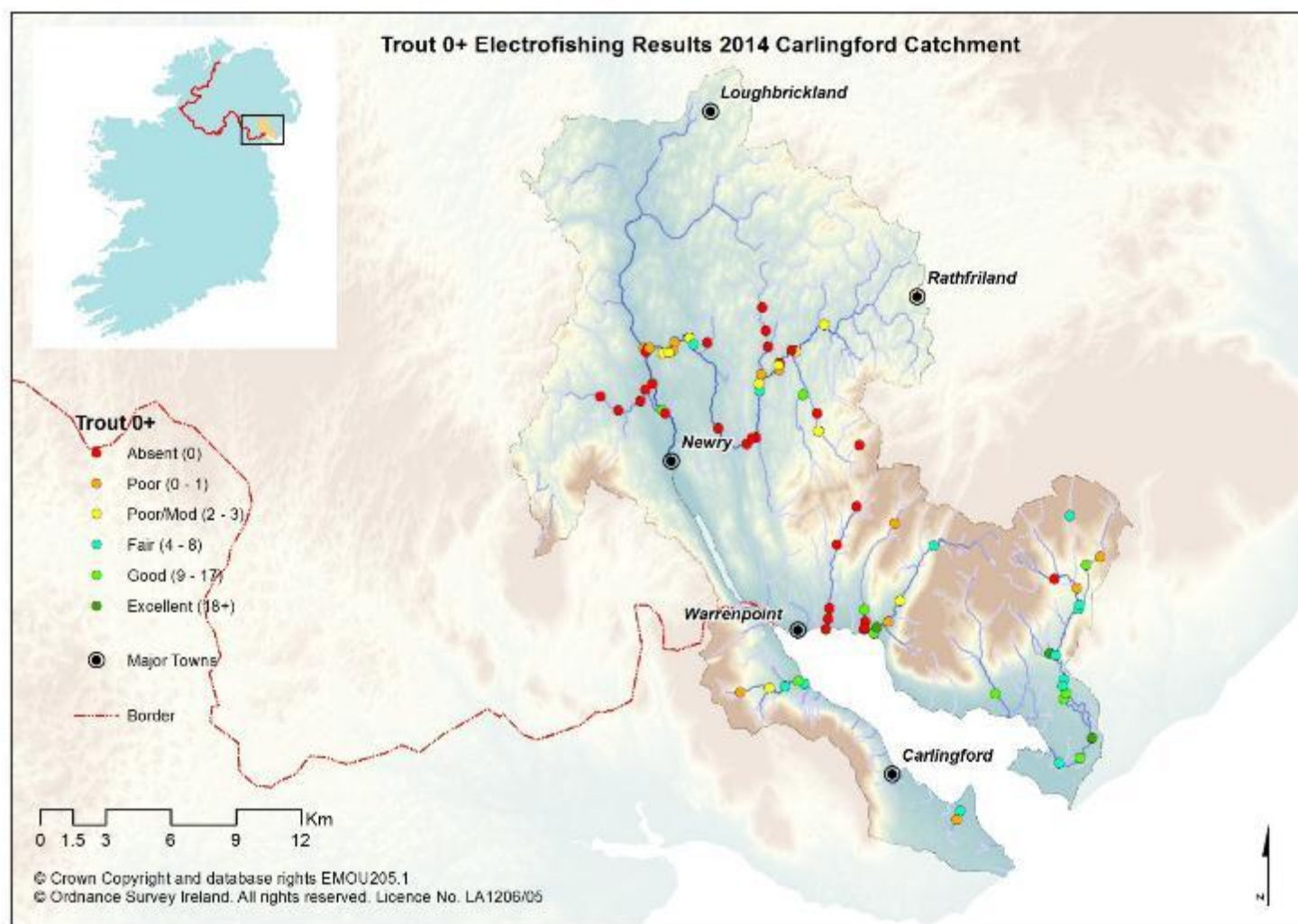


Fig.17 Carlingford area trout fry electrofishing classifications 2014.



### 3.3 DISCUSSION

At present rod catch and juvenile electrofishing surveys are the two monitoring programmes conducted annually on Trout populations within the Foyle and Carlingford areas. In order to extend the baseline of information future expansion of the monitoring programmes could include the development of a Trout redd index on key tributaries. This would facilitate the analysis of trends over time and the effects of any remedial works. Adult Sea trout electrofishing surveys could also be conducted to gain key biological information which could assist with regulating catch size. The Carlingford catchments are significant habitats for Sea trout. Within the Carlingford area there is competition with Atlantic salmon for feeding territories. While both species have slightly different habitat requirements at times they do overlap. The general trend is that salmon dominate the main stem and swifter water while trout dominate the smaller tributaries.

Ongoing monitoring is essential for the development of appropriate and contemporary regulation of the rod fishery.



Fig.18 Sea trout captured on the Altnaghree Burn, 2014.

#### 4.0 SUMMARY OF OTHER SURVEYS AND FISH STOCK ASSESSMENTS

- Seven Water Framework Directive fish surveillance monitoring stations were surveyed within the Foyle area in 2014. No surveys were carried out within the Carlingford area.
- Further details can be found in the 2014 WFD Fish Surveillance Report on the Loughs Agency website under the publications section [www.loughs-agency.org](http://www.loughs-agency.org)
- Work on Invasive species continued as part of the INTERREG funded CIRB project. The CIRB project covers the Newry/Clanrye/Newry Canal catchment in the Carlingford area and the Faughan catchment in the Foyle area. Additional catchments in Ireland and Scotland are included in the project.
- In 2014 the Loughs Agency continued to meet its obligations under a raft of national and international legislation. In addition to meeting its statutory duties the Loughs Agency plans its monitoring works to best inform current and future policy development.
- A still water fish survey was conducted on Lough Nambraddan in 2014. A separate report has been prepared to report the findings.

##### Additional Surveys and Fish Stock Assessments

Fish stock assessments are an extremely important part of fishery management. They provide the information on which to develop policy and to implement appropriate legislation and regulation to ensure future sustainable management.

During 2014, seven stock assessments were conducted for Water Framework Directive fish monitoring purposes.

These sites were surveyed by quantitative electrofishing. This method involves stop netting of a section of river and conducting electrofishing removal sampling. The data generated can be used to calculate the densities of different species and age classes present. Other information is collected on site to derive fish classifications for incorporation into overall surface waterbody classification under the Water Framework Directive.

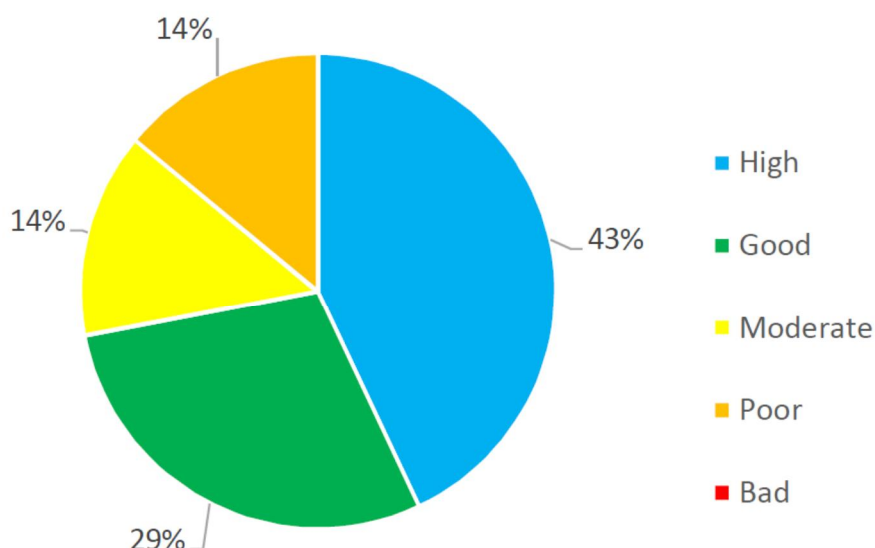
#### 4.1 WATER FRAMEWORK DIRECTIVE FISH MONITORING

The WFD is a key piece of European environmental legislation designed to facilitate improvements in our aquatic environments. The Loughs Agency under the guidance of the Northern Ireland WFD Fish Group is responsible for fish monitoring within the Foyle and Carlingford areas. This involves the monitoring of 27 surveillance monitoring stations on a rolling three year basis. Quantitative electrofishing is the preferred method where possible and the data collected is used to derive a fish classification which is then combined with the results from other monitored parameters to create an overall surface water body classification. This ranges from High Ecological Status through Good Ecological Status, Moderate Ecological Status, Poor Ecological Status and Bad Ecological Status. The target set by the WFD is that all water bodies must reach Good Ecological Status by 2015. In 2014 the Loughs Agency monitored seven surveillance stations within the Foyle area.

Of the seven Water Framework Directive fish surveillance monitoring stations surveyed within the Loughs Agency jurisdictions in 2014 all seven were within Northern Ireland. An additional two waterbodies had sufficient fisheries data to be able to derive an FCS2 Ireland classification. 43% of sites surveyed were classified as high status, 29% as good status, 14% as moderate status and 14% as poor status. 0% of sites were classified as bad status.



Fig.19 Water Framework Directive fish monitoring on the River Derg, 2014.



Classification in 2014 was completed using the WFD compliant classification tool, Fish Classification Scheme 2 Ireland (FCS2 Ireland) with the option of a professional judgement override. No results were overridden using professional judgement in 2014. Additional indicative classifications have been derived for water bodies within the Foyle and Carlingford areas where certain criteria have been applied to semi quantitative Salmon Management Plan electrofishing data. These criteria have been developed by the Northern Ireland Water Framework Directive Fish Group and are outlined within the annual Water Framework Directive report which available under the publication section of the Loughs Agency website.



Fig.20 Brown trout captured in a fyke net on the Owenkillev River, 2014.



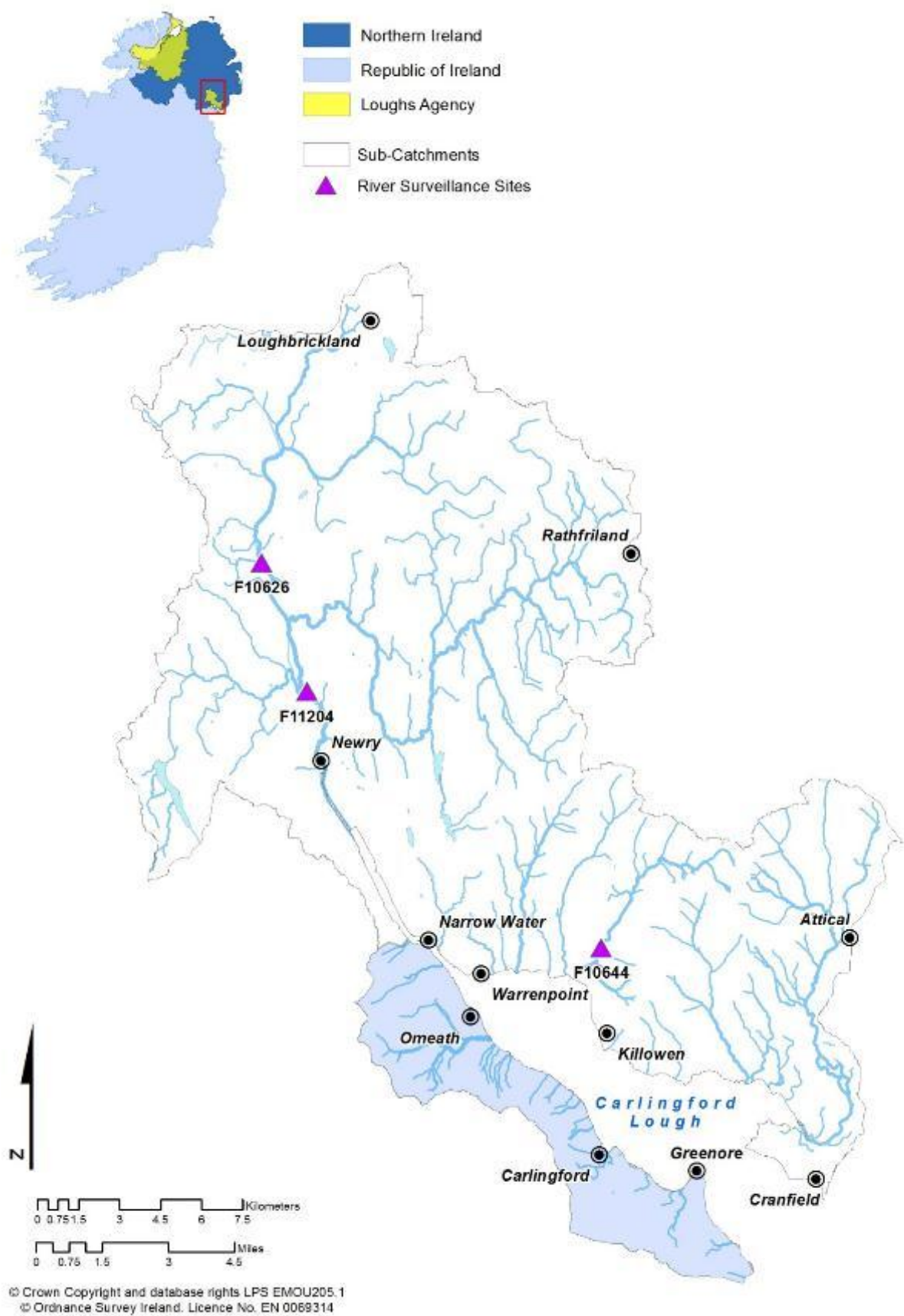


Fig.21 Water Framework Directive fish surveillance monitoring stations within the Carlingford area.

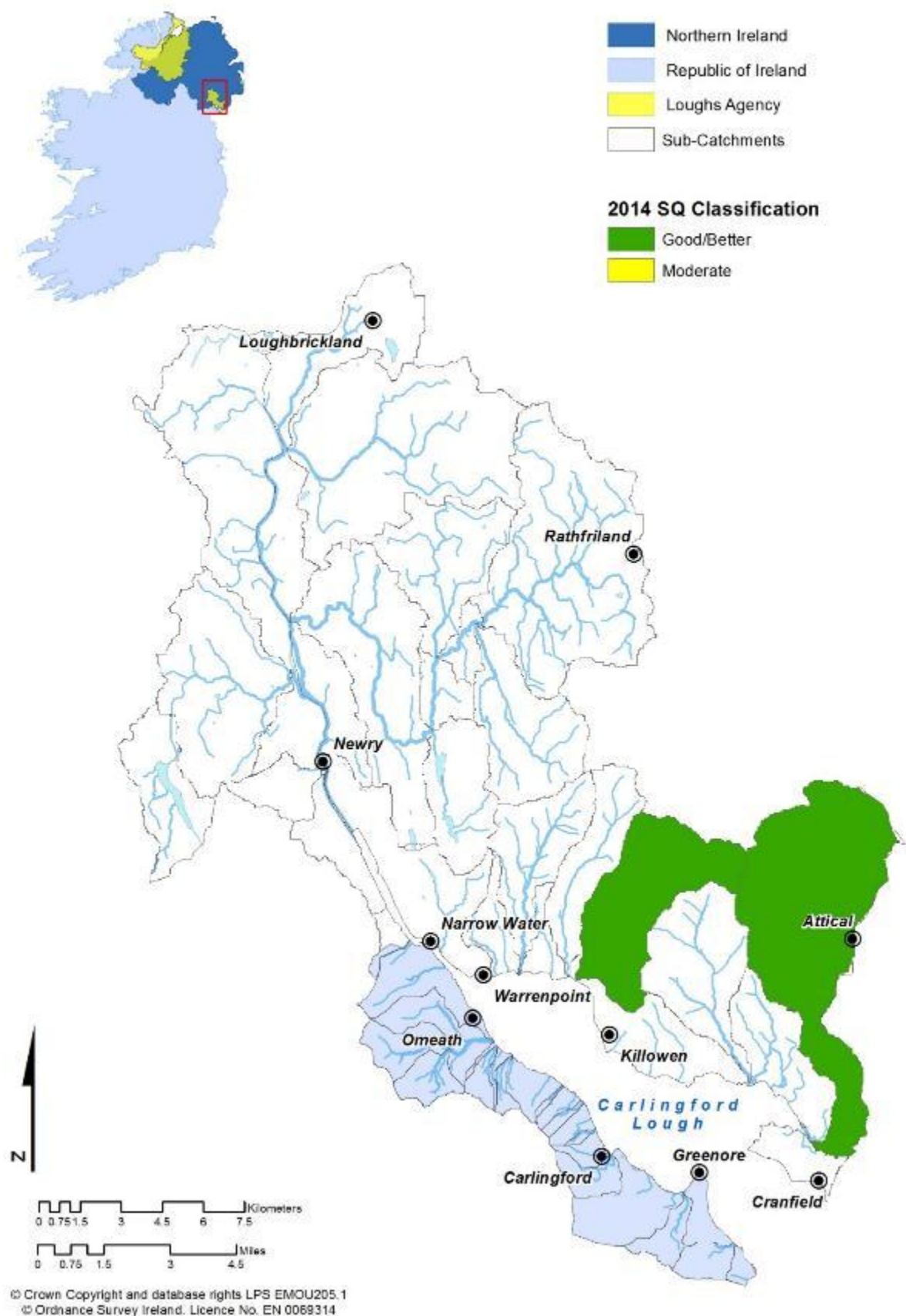


Fig.22 Indicative classifications based on Loughs Agency 5 min semi quantitative electrofishing data 2014.

Page 30 of 39

## 4.2 INVASIVE SPECIES AND BARRIERS TO MIGRATION

Controlling priority Invasive species and Restoring native Biodiversity (**CIRB**) project. **CIRB** is an INTERREG IVA funded project co-ordinated across three jurisdictions including Northern Ireland Republic of Ireland and Scotland. The partners include Queens University Belfast, University of Ulster, Rivers and Fisheries Trusts Scotland (RAFTS), Inland Fisheries Ireland, Tweed Foundation, Galloway Fisheries Trust and the Ayrshire Rivers Trust. A number of rivers within each jurisdiction including the Faughan and Newry catchments have been chosen as demonstration sites where Invasive Non Native Species (INNS) will be controlled and methods for restoring native biodiversity trialled. While the Loughs Agency are not a formal project partner we are a member of the steering group overseeing the project and have facilitated events and knowledge transfer.

The CIRB project was a good example of partnership working including the engagement of stakeholders to tackle a persistent issue. The CIRB project concluded December 2014. Online resources can be found at <http://www.qub.ac.uk/research-centres/cirb/News/> <https://vimeo.com/113119046> & <https://vimeo.com/113110997>



Fig.23 Mapping invasive species on a handheld GIS.



## **5.0 CARLINGFORD AREA INSPECTORS UPDATE 2014**

### **5.1 ENVIRONMENTAL MONITORING**

In 2014 the Fishery Inspectorate continued its work on a number of ongoing environmental monitoring programs including habitat surveying, electrofishing, redd counting and water sampling. Agency staff also carried out environmental monitoring following the discharge of heavy bunker oil from a vessel in Warrenpoint Harbour in October. The incident resulted in the closure of the Narrow Water wild mussel bed.



Fig.24 Fishery officers carry out follow-up electrofishing survey of enhancement works on Newry/Clanrye River.

### **5.2 PROTECTION**

The incidence of anglers fishing without a Loughs Agency licence/endorsement reduced in 2014. However, the illegal killing of coarse fish remains a significant issue and requires constant monitoring. The incidence of illegal disturbance of river channels reduced in 2014. There was however, an increase in requests to carry out culverting of small streams. This has the potential to have a cumulative impact on the availability and connectivity of fish habitat and requires careful



monitoring. A high severity fish kill occurred on the Bessbrook River in July. The fish kill was caused by the discharge of agricultural waste to the Bessbrook River which flows into Newry Canal. It affected over 8 ½ km of channel and more than 500 dead fish and eels were recovered during the investigation. Fishery Officers also deployed an aeration system in an attempt to mitigate the impact of the discharge.



Fig.25 Agency staff deploy aerator system in attempt to mitigate impact of agricultural waste discharge on the Bessbrook River, July 2014.

### 5.3 ANGLING DEVELOPMENT

The drop in water levels at Camlough Lake for engineering and safety purposes has greatly improved shoreline access. As a result, anglers have spread to parts of the lake previously only accessible by boat or with landowner permission. While this has allowed a greater number of anglers to access the lake, it has also created challenges for monitoring illegal activity. Fishery officers were involved in a number of education/promotional events in the catchment. This involved work with the popular “touch tank” where staff give talks and give the public an opportunity to experience a range of species found on the seashore.



Fig.26 View of Carlingford Lough from Slieve Foy.

## **6.0 STILLWATER FISH SURVEYS**

In 2014 one stillwater fish survey was conducted in the Foyle and Carlingford areas. Lough Nambraddan is located approximately 1km west of Finntown, Co. Donegal in the Finn catchment. The lough was surveyed over one night on the 13<sup>th</sup> of August 2014.

A number of different rationales exist for conducting stillwater fish surveys. These include but are not limited to, a full Water Framework Directive fish in lakes survey which can be used for WFD classification purposes. This follows a detailed methodology described in the Water Framework Directive compliant NS Share Methods Manual for systematic surveying of lakes for fish. Other rationales include baseline surveying to inform conservation, protection and development objectives. Individual stillwater fish survey reports will be available on the Loughs Agency website

In 2014 Lough Nambraddan was chosen for a stillwater fish survey as no previous baseline fisheries survey had been conducted on the lough. A private Rainbow trout fishery had been operated on the site in the past but is no longer in operation. It has also been identified as a lough of interest within the upper Finn catchment. It was anticipated that the survey report could significantly contribute towards the future sustainable development of angling initiatives,

infrastructure and development plans for the lough. Potential exists for a well-managed fishery to be maintained by the owner of the fishing rights.



Fig.27 Still water fish survey, Lough Nambraddan 2014.

## 7.0 FISHERIES HABITAT IMPROVEMENT

In 2014 a number of instream and riparian habitat improvement projects were conducted in the Foyle and Carlingford areas. This included a wide variety of works ranging from native riparian tree planting projects, bank protection, the introduction of spawning and nursery substrate into rivers

In 2014 the Loughs Agency initiated a Fisheries Habitat Improvement Strategy. This is a fisheries management tool designed to help outline methodologies for identifying and developing fisheries habitat improvement projects. The purpose of the document is to define what fisheries habitat improvements are, highlight why they are needed and to outline a strategy for effective and efficient delivery of these within the Loughs Agency jurisdiction. It is envisaged that this will be delivered through the development of catchment implementation plans.



Fig.28 Volunteers during Wild Trout Trust practical habitat improvement workshop





Fig.29 Practical habitat improvement workshop on the Murlough Burn.



Fig.30 Bank protection underway using soft methods.





Fig.31 Glenshane native riparian tree planting scheme 2014.



Fig.32 Trees were individually staked and guarded.

## 8.0 CATCHMENT INITIATIVES

Integrated catchment management planning can only be delivered through the development of true partnerships between statutory and non-statutory partners. An understanding of desired outcomes and methods of delivery is essential in matching requirements and expectations to actions.

Exemplar catchment management planning is an iterative process developed and refined over time between parties who have fostered and developed productive working relationships.

Environmental legislation in tandem with societal requirements dictates that steps are taken to improve our natural habitats. From an aquatic perspective the Water Framework Directive is the key driver towards integrated management of our aquatic environments. The Loughs Agency acknowledges this and is eager to encourage participatory approaches as a way to effectively and efficiently meet challenging objectives.

In 2014/15 and beyond the Loughs Agency will aim to engage local stakeholders in participating in river corridor litter picks, the development of habitat improvement works and trout monitoring programmes.

If you are a member of an organisation which may be interested in working on collaborative conservation and protection projects within the Carlingford catchments please contact [art.niven@loughs-agency.org](mailto:art.niven@loughs-agency.org) to discuss potential projects.



## **9.0 GENERAL ACTIONS FOR 2014/2015**

- Communicate monitoring findings through various media to stakeholders.
- Implement and develop actions from the Trout Strategy.
- Facilitate user groups river clean ups by canoe and foot.
- Encourage Angling Associations and community organisations to instigate litter picks/river clean ups within the Foyle area.
- Continue to Implement and develop fisheries monitoring programme.
- Conduct water quality monitoring programme.
- Continue to screen all planning applications within the Foyle area for potential impacts to the fishery and aquatic resources.
- Facilitate the implementation of habitat improvement projects including riparian buffer zone creation, fencing, native species planting and in-channel habitat improvements including spawning bed and nursery habitat improvement.
- Work with interested statutory and non-statutory partners to improve water quality and native fish populations.

